

# Membership has its privileges:

Doing business in today's global economy is tough. Keeping an eye on the economic climate and understanding how your business will be effected by changes occurring in the local, state, national and international markets is the best defense against a sluggish bottom line. You don't have to be an economist to perform like one. Join the Economic Forum of Palm Beach County, for the uninhibited exchange of ideas and insights into a wide range of economic issues crucial to your economic survival. Meet and learn from our members and speakers, some of our county and nation's foremost economic & business experts.

Another benefit of membership is reduced rates for Economic Forum Luncheon Meetings from the rates paid by non-members. Guest policy limited to two visits.

## MEMBERSHIP APPLICATION

Select the desired level of membership, complete the form below and mail it with your check, made payable to:

**Economic Forum of Palm Beach County**

- Individual/Corporate 1 Yr Membership \$385
- Corporate 1 Yr Membership for 2 \$500
- Corporate 1 Yr Membership for 3 \$650

**Additional members can be added to Corporate memberships for an additional \$150 per added member.**

Company Name

1st Member Name (Primary Contact) & Title

E-mail Address

2nd Member Name & Title

E-mail Address

3rd Member Name & Title

E-mail Address

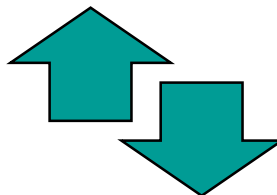
Company Address

City, State, Zip

Phone Number

Fax Number

**Economic Forum of Palm Beach County**

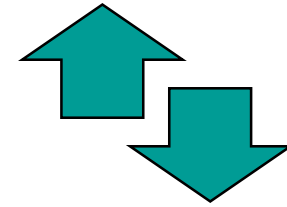


P.O. Box 14834  
North Palm Beach, FL 33408

561.622.9920

Fax: 561.624.7030

e-mail: [jkline@rebelcook.com](mailto:jkline@rebelcook.com)



# Economic Forum of Palm Beach County

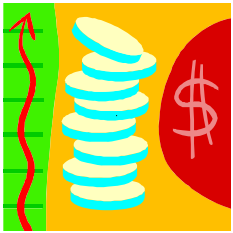
**Rebel Cook  
President  
561.622.9920**

[www.economicforumppbc.com](http://www.economicforumppbc.com)

## Why the Economic Forum?

---

The Economic Forum of Palm Beach County was created to foster a better understanding of economic and political issues and their relationship to economic prosperity on all levels from local to international.



For over two decades, the Economic Forum has provided a platform for the open and uninhibited exchange of information and has fostered insight

into a wide range of economic issues. The Economic Forum of Palm Beach County was organized in 1991 to pursue this objective from a local point of view.

## Who are the members?

---

Clearly economic forces and political issues are seen by the Economic Forum as an eclectic range of topics. That diversity is furthered by the range of professions pursued by our members: economists, corporate and public sector forecasters, demographers, real estate brokers and researchers, appraisers, attorneys, planners, bankers, and elected officials.

## When does the Forum meet?

---

The Economic Forum meets monthly at The Cohen Pavilion at the Kravis Center in West Palm Beach. Registration begins at 11:30 am, in order for members and guests to become acquainted and enjoy a little causal conversation before being seated for lunch, which is served promptly at noon.

Featured speakers begin each presentation at 12:30 pm. Our Q & A among the best and most lively. Our meeting concludes at approximately 1:30 pm.

## Who are our Speakers?

We invite speakers from both the national and local scene to address business and political issues. Some of the topics covered include the trends in markers for residential, commercial and industrial real estate markets; the revitalization of Downtown West Palm Beach and City Place; the economic impact of agriculture in Palm Beach County; the expansion of the Port of Palm Beach.

National speakers from NASDAQ and Wall Street have addressed issues affecting the rise and fall of the stock market. Economists from the Federal Reserve Bank have flown in to discuss interest rates and banking issues.

## Some of Our Speakers

---

Mark Vitner  
Chief Economist  
Wells Fargo

Florida Legislative Update

Judicial Candidates Forum  
Circuit & County Court

Dan Riecher  
Under Secretary  
U. S. Energy Department

Sheriff Ric Bradshaw

Federal Reserve Bank  
Chief Economist - Atlanta

Randy Schultz  
Palm Beach Post

Jeffrey Stoops  
SBA Communciations

National Field Director  
Concord Coalition

Harry Zeeve  
Nationl Field Director  
Concord Coalition

Tom Kloza  
Chief Oil Analyst - OPIS

Bruce Christman  
TECO–Peoples Gas

Adam Putnam  
Florida Commisioner of Agriculture